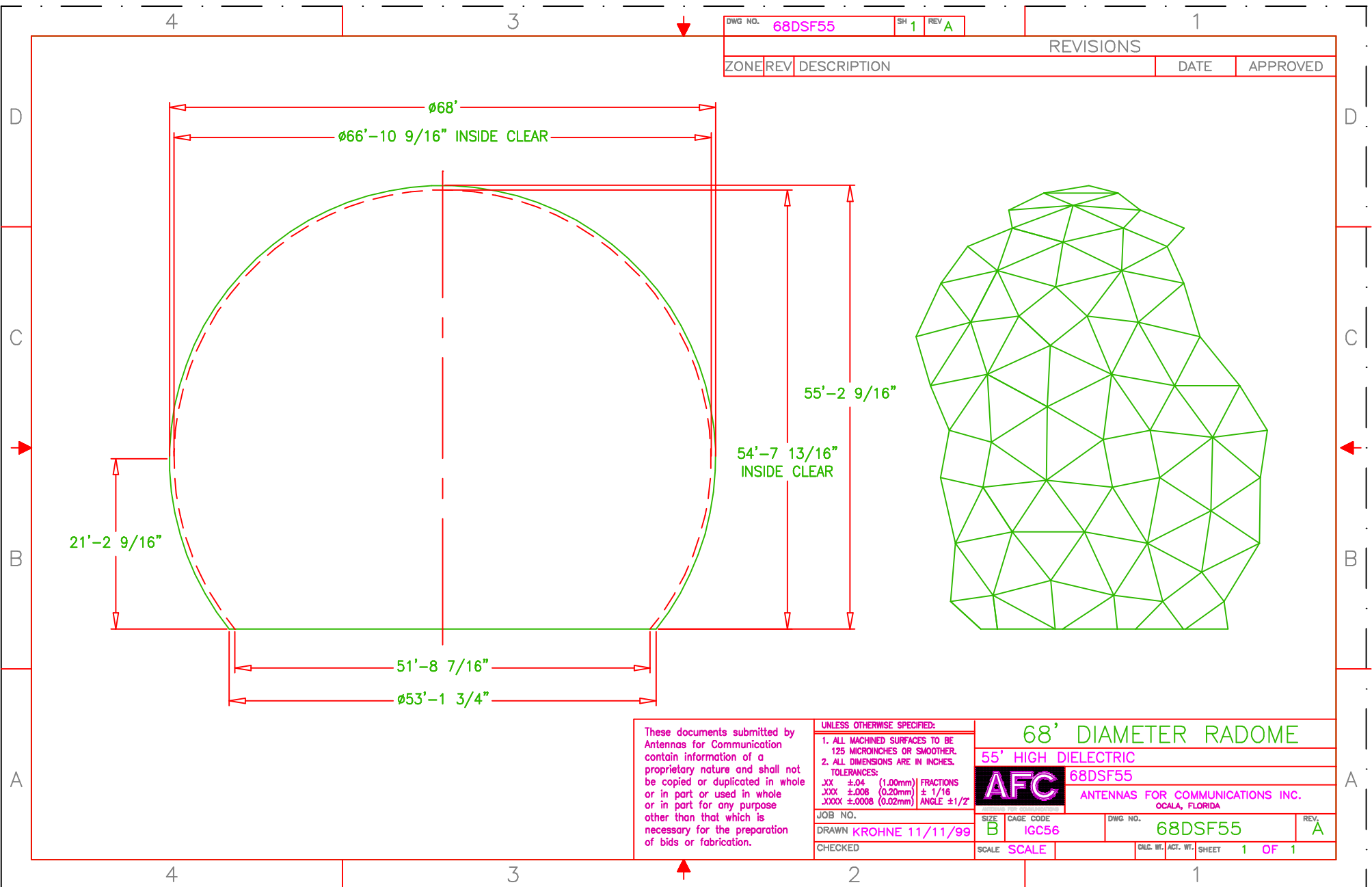


DWG NO. 68DSF55 SH 1 REV A

REVISIONS

ZONE	REV	DESCRIPTION	DATE	APPROVED
------	-----	-------------	------	----------



21'-2 9/16"

Ø68'

Ø66'-10 9/16" INSIDE CLEAR

55'-2 9/16"

54'-7 13/16" INSIDE CLEAR

51'-8 7/16"

Ø53'-1 3/4"

These documents submitted by Antennas for Communication contain information of a proprietary nature and shall not be copied or duplicated in whole or in part or used in whole or in part for any purpose other than that which is necessary for the preparation of bids or fabrication.

UNLESS OTHERWISE SPECIFIED:

1. ALL MACHINED SURFACES TO BE 125 MICRONS OR SMOOTHER.
  2. ALL DIMENSIONS ARE IN INCHES.
- TOLERANCES:
- |       |        |          |             |
|-------|--------|----------|-------------|
| .XX   | ±.04   | (1.00mm) | FRACTIONS   |
| .XXX  | ±.008  | (0.20mm) | ± 1/16      |
| .XXXX | ±.0008 | (0.02mm) | ANGLE ±1/2° |

68' DIAMETER RADOME

55' HIGH DIELECTRIC

	68DSF55	
	ANTENNAS FOR COMMUNICATIONS INC. OCALA, FLORIDA	

JOB NO.	SCALE	DWG NO.	REV.
DRAWN KROHNE 11/11/99	SCALE	68DSF55	A
CHECKED	SCALE	DWG. WT. ACT. WT.	SHEET 1 OF 1